

Collectorpro Appraiser Edition – Multi User Update Instructions Revised 07/24/2019

Collectorpro Appraiser Edition is available in a multi-user version that allows multiple users to access the program at the same time. The Collectorpro data files and images are stored on a shared drive on a file server (usually Windows Server) and the Collectorpro software resides on each workstation that accesses the Collectorpro Software. In order to update the software, each workstation that has Collectorpro software installed needs to be updated. Below are the step-by-step instructions for updating the Collectorpro software.

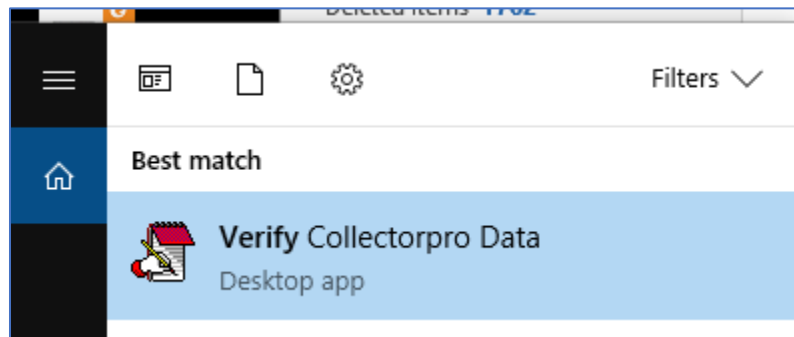
Instructions

1. Installing Collectorpro:

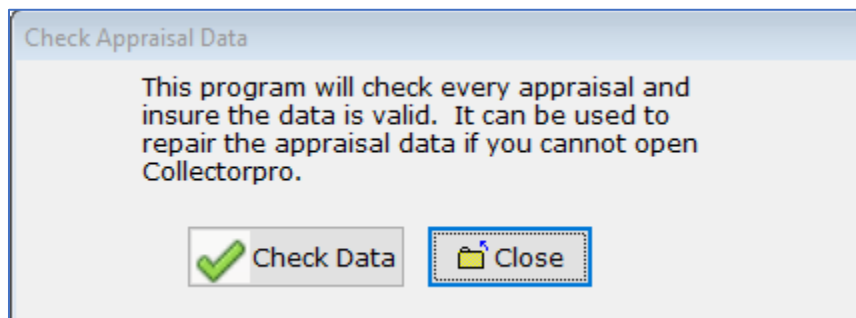
- a. Close Collectorpro Software on all workstations
- b. On the first workstation download and open the installer for the updated Collectorpro software using the link below
- c. <https://collectorpro.com/download/appraiserinstall.exe>
- d. When the install is finished uncheck the box labeled “Launch the program” and click the Finish button

2. Updating the data files on the server (on the first workstation only):

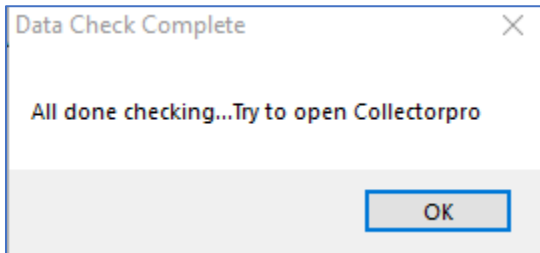
- a. On the first workstation click on the Windows Search on the taskbar and type “Verify Collectorpro Data” and the Best Match will be Verify Collectorpro Data – Desktop app.
- b. Click this icon in the search results to start the Verify Collectorpro Data Program.



- c. Next click the Check data button



- d. The Verify Data will update all appraisal data files on the server as required. When finished the screen below will be displayed.
- e. Click the Ok button to close the program.



- f. Repeat the steps in section 1 only for each other workstation.

END OF DOCUMENT